



From Research to Resilience: Webinar series

CRFS and MUFPP Indicators in Quito, Ecuador

Alexandra Rodríguez
Participatory Urban Agriculture Project Manager

October 12, 2021

IN PARTNERSHIP WITH:



From urban agriculture to food policy

Urban Agriculture Project AGRUPAR

- security and sovereignty,
- environmental management,
- employment and income improvement,
- social inclusion,
- sustainability and resilience



Cualitative leap

Green infrastructure in cities /
Multifunctional NBS to face climate change

IN PARTNERSHIP WITH:



Evaluation and analysis of the Quito food system

City-Region Food Systems Evaluation Project



- Methodology
- Tools
- Permanent technical support



Food for the Cities Programme



PRODUCTION

DMQ's production only reaches 5% of its requirements.

The consumption of the city does not always contribute to the local production process.

High inequity in access to productive resources.

The quality of work benefits is precarious.

High use of agrochemicals.

High underutilization of productive land.

Low crop productivity.

FOOD PROCESSING

High territorial concentration and profit in few companies.

96% of the agri-food companies are located in the ring 1-2 but the raw material comes from the ring 3.

Milling companies import up to 98% of their raw material.

DISTRIBUTION

Long chains of intermediation.

4 supermarket chains handle 90% of the retail distribution.

5% - 20% of production is direct marketing.

FOOD PROCUREMENT

50% supermarkets.

21% neighborhood stores and minimarkets.

40% of the population uses a trusted lending figure.

20% of the population stops buying basic products for lack of money.

CONSUMPTION

There is strong inequality and vulnerability in consumption.

Homogenized pattern of consumption / unbalanced diet.

Chronic child malnutrition: 29%.

Overweight and obesity 63%.

Consumption of meals outside the home: 71%.

POST - CONSUMPTION

Untreated organic waste.

70 TON per week of food with possibility to be redistribute.



INFORME DE SÍNTESIS DINÁMICA Y PLANIFICACIÓN DEL SISTEMA AGROALIMENTARIO EN LA CIUDAD-REGIÓN QUITO



IN PARTNERSHIP WITH:

paq PACTO AGRO ALIMENTARIO DE QUITO

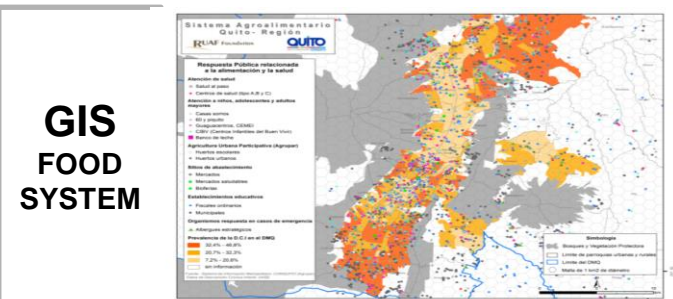
Participatory process of analysis and contribution to the construction of Food Policy in Quito (2017 – 2018)

Involve all sectors and actors of the food system

Preparation of a favorable context for effective action

Find consensus with different points of view (opposite poles)

Promote coordination between departments and sectors at the municipal and territorial level



25 maps



IN PARTNERSHIP WITH:



The Milan Urban Food Policy Pact Monitoring Framework



RESEARCH PROGRAM ON Water, Land and Ecosystems

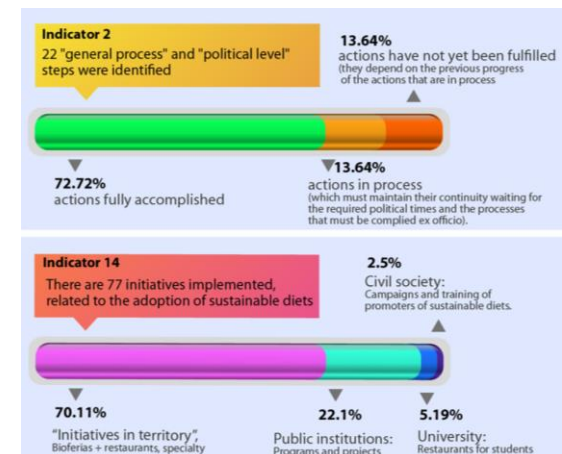
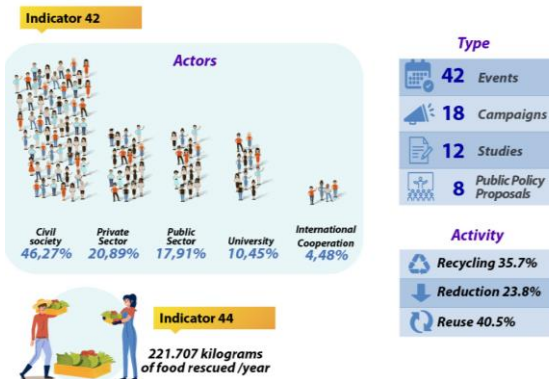
LED BY IWM International Water Management Institute

MUFFP	Indicators MUFFP
Axes of Action	
Governance	2. Presence of an active food policy and multi-stakeholder planning structure (eg food policy councils, food associations, food coalitions)
Sustainable diets and nutrition	14. Number of activities directed or supported by the city to promote sustainable diets
Food waste	42. Annual number of events and campaigns aimed at reducing food loss and waste. 44. Total annual volume of surplus food recovered and redistributed for direct human consumption

THE MILAN URBAN FOOD POLICY PACT MONITORING FRAMEWORK
A practical handbook for implementation

Logos: Food and Agriculture Organization of the United Nations, MILAN URBAN FOOD POLICY PACT, RUAF, WILFRID LAURIER UNIVERSITY, LAURIER Inspiring Lives, RESEARCH PROGRAM ON Water, Land and Ecosystems, IWM International Water Management Institute, CGIAR.

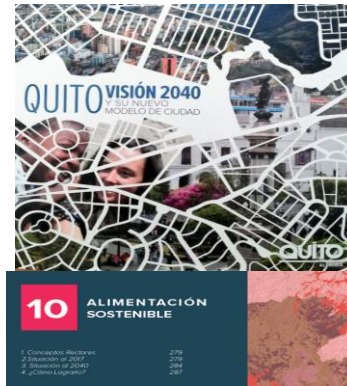
Initiatives to reduce food losses and waste



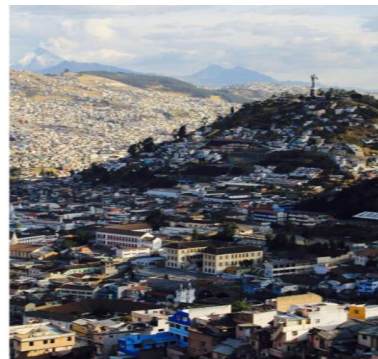
IN PARTNERSHIP WITH:



Achievements



PLAN DE ACCIÓN CLIMÁTICO QUITO 2050



- Integrate them into plans, programs and projects.
- Flow of knowledge, information and communication for the food system of Quito

IN PARTNERSHIP WITH:



Next steps



Healthy food hubs: building sustainable and resilient agri-food systems in Lima and Quito (IDRC)



- Scale of proximity
- Actors and dynamics typical in the neighborhoods
- Improve understanding of the response of urban food systems
- Identify and suggest improvements in food response actions implemented
- Involve and support urban and peri-urban agricultural producers, consumers and municipal authorities

IN PARTNERSHIP WITH:



Thank you !!

IN PARTNERSHIP WITH:

